

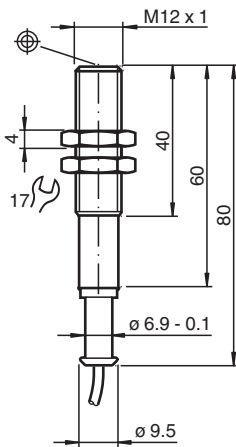
Inductive sensor

NJ2-12GM-N-Y08766

- Comfort series
- 2 mm flush



Dimensions



Technical Data

General specifications

Switching function		Normally closed (NC)
Output type		NAMUR
Rated operating distance	s_n	2 mm
Installation		flush
Assured operating distance	s_a	0 ... 1.62 mm
Reduction factor r_{AI}		0.4
Reduction factor r_{Cu}		0.3
Reduction factor r_{304}		0.85
Output type		2-wire

Nominal ratings

Nominal voltage	U_o	8.2 V (R_i approx. 1 k Ω)
Switching frequency	f	0 ... 2000 Hz
Current consumption		
Measuring plate not detected		min. 3 mA
Measuring plate detected		≤ 1 mA

Functional safety related parameters

MTTF _d		5887 a
Mission Time (T_M)		20 a
Diagnostic Coverage (DC)		0 %

Compliance with standards and directives

Standard conformity		
NAMUR		EN 60947-5-6:2000 IEC 60947-5-6:1999

Release date: 2023-01-27 Date of issue: 2023-01-27 Filename: 70133239_eng.pdf

Refer to "General Notes Relating to Pepperl+Fuchs Product Information".

Pepperl+Fuchs Group
www.pepperl-fuchs.com

USA: +1 330 486 0001
fa-info@us.pepperl-fuchs.com

Germany: +49 621 776 1111
fa-info@de.pepperl-fuchs.com

Singapore: +65 6779 9091
fa-info@sg.pepperl-fuchs.com

PEPPERL+FUCHS

Technical Data

Standards	EN 60947-5-2:2007 EN 60947-5-2/A1:2012 IEC 60947-5-2:2007 IEC 60947-5-2 AMD 1:2012	
Approvals and certificates		
IECEX approval		
Equipment protection level Gb		IECEX PTB 11.0037X
Equipment protection level Da		IECEX PTB 11.0037X
Equipment protection level Mb		IECEX PTB 11.0037X
ATEX approval		
Equipment protection level Gb		PTB 00 ATEX 2048 X
Equipment protection level Da		PTB 00 ATEX 2048 X
UL approval		cULus Listed, General Purpose
ANZEx		18.3018X
Ambient conditions		
Ambient temperature	-25 ... 100 °C (-13 ... 212 °F)	
Mechanical specifications		
Connection type	cable	
Housing material	Stainless steel 1.4305 / AISI 303	
Sensing face	PBT	
Degree of protection	IP67	
Cable		
Cable diameter	4.8 mm ± 0.2 mm	
Bending radius	> 10 x cable diameter	
Material	PVC	
Core cross section	0.34 mm ²	
Length	L	5 m
General information		
Use in the hazardous area	see instruction manuals	

Connection

